



Manufacturer of High Precision

Circular Saw Cutting machine

*High Performance & High Precision*

**SAW -LUTIONS** in metal sawing..



## **TRADEANANTA INTERNATIONAL LLP**

**Phone :**

+91 97148 89595  
+91 76001 20912

**E - mail :**

jenish@tradeananta.com  
nirav@tradeananta.com

**Address :**

C/o. Plot No. 1922 / 2, Akash Depo., Nr. Kishan Forge, Gate - 2,  
Metoda, Rajkot, Gujarat - 360 021.

[www.tradeananta.com](http://www.tradeananta.com)

# THE COMPANY

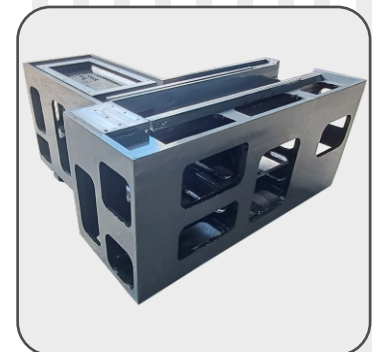
Inheriting the 20+ years of experience in manufacturing of metal working machines, we bring to you FIRST OF ITS KIND IN INDIA Circular Saw Cutting machine with to guarantee the

- ☑ Highest level of Rigidity
- ☑ Consistent Accuracy
- ☑ Lowest Cycle Time
- ☑ Smallest Remanent Piece
- ☑ Safety
- ☑ Ease of Operation
- ☑ Shortest ROI
- ☑ Highly Reliable

## PILLARS OF OUR CIRCULAR CUTTING SAW-LUTIONS :

### ☑ Graded Cast-Iron Structure

- FIRST IN INDIA to provide Graded Cast Iron structure.
- Highly Ribbed FG-260 grade duly stress relieved.
- Hand Scrapped assembly to ensure Highest Rigidity, Maxi. Vibration Absorption and Long-Lasting Structural Stability.



### ☑ Rigid Gear Box

- Hardened & Ground heavy duty gears.
- Electro-Magnetic brake to ensure ZERO BACKLASH.
- FG-300 Grade body.



### ☑ Inclined Cutting Axis

- 30 Degree inclined cutting axis.
- Double nut screw.
- Roller LM

### ☑ Motion Control System

- SYNTEC Motion Control system with 8" Display.
- Simultaneous two axis motion control.
- Simple and Interactive Operator console.
- Axis retraction during power failure.
- Absolute Servo Motor Technology



☑ **Rigid Material Feeding Mechanism**

- Heavy Duty Structure to ensure vibration free operation.
- Easy to handle.
- Single sensor-based feeding.
- Rollers for smoother feeding.



☑ **Inverter Duty Motor**

- ABB Make Heavy duty inverter duty class motor.
- Driven by Digital Servo Drive.
- Optimally designed power transmission mechanism.
- Effectively ventilated assembly.



☑ **Other High-End features which give us an upper hand in technology are**

- Motorized blade cleaning brush.
- Cutter cover without any pockets to avoid accumulation of chips.
- Lowest remanent piece length.
- Ease of maintenance.
- Vertical electrical panel.
- Partitioned single place mounting of other accessories.
- Highest safety standards.
- Ergonomic design for operator easiness.
- Low skill operatability
- Efficient chips management.
- Standard make bought out items like - SYNTEC, ABB, YUKEN, PMI / HIWIN, SKF, Schneider Electric, Phoenix etc.

## PRODUCT RANGE :

### STANDARD FEATURES

- FG-260 Graded Cast Iron Structure.
- 4 Channel Recirculating Liner Motion Guideways.
- Precision Ball Screw.
- High Precision Gear box.
- Hydraulic Clamping unit with pressure adj. option (Horizontal & Vertical).
- Environmentally friendly Mist Oil Coolant System.
- Chip Conveyor with Trolley.
- End Piece Separator.

- Hydraulic Oil Cooler.
- Absolute Servo Motor Drive.
- Motion Control System.
- Rigid Bar Feeder Unit.
- Auto Lubrication Unit with Low Level Warning.
- Machine Status Indicator.
- Electro-Magnetic Brake.
- Part Counter.

### OPTIONAL FEATURES :

- Out Feed Conveyor • Bundle Loader • Pusher for Square Bar Auto Loading • Mist Collector

### Technical Specifications

MODEL	TA - 80	TA - 110
Capacity - Round Bar	10 - 80 mm	20 - 110 mm
Capacity - Square Bar	10 - 65 mm	20 - 80 mm
Saw Blade Size	285 x 32 x 2.0 mm	360 x 40 x 2.6 mm
Saw Blade Speed Range	50 - 160 RPM	50 - 150 RPM
Material Length - Single Feed	6 - 700 mm	8 - 700 mm
Material Length - Multi Feed	6 - 6000 mm	8 - 6000 mm
Remnant Length	65 mm + Cut Length	70 mm + Cut Length
Cutter Motor Power	9.3 KW	11 KW
Hydraulic Tank Capacity	80 ltr.	80 ltr.
Gross Weight (with loader)	3500 kg.	3800 kg.
Control System Type	Motion Control	Motion Control
Power Supply	3 Ph. 415 V AC	3 Ph. 415 V AC

We have launched **TA - 80 & TA - 110** Models which will be followed by **TA - 50 & TA - 150** very shortly.

#### Branch Office

Rajkot : +91 97148 89595  
Ahmedabad : +91 97148 89595  
Pune : +91 95612 37930

Punjab : +91 99886 93302  
Delhi : +91 97148 89595  
NCR : +91 97148 89595

Karnataka: +91 97148 89595  
Tamilnadu : +91 97148 89595  
Rest of India : +91 97148 89595